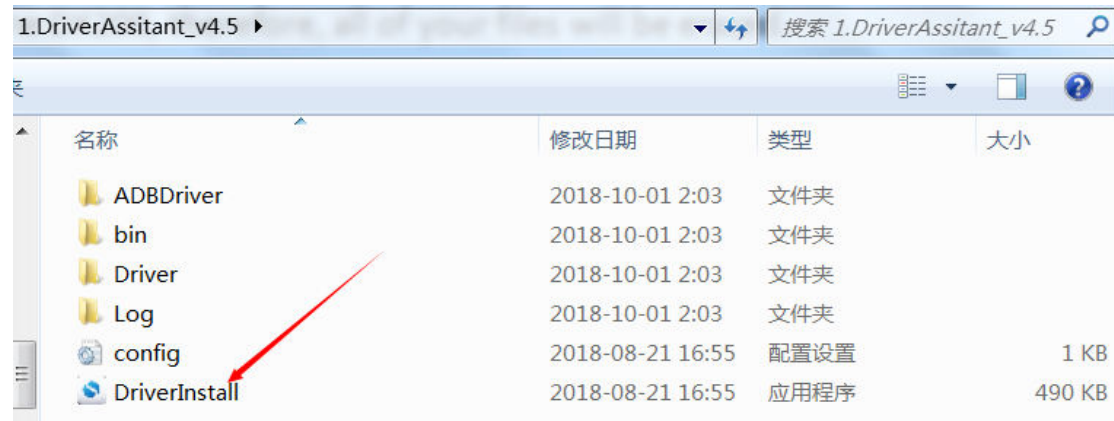


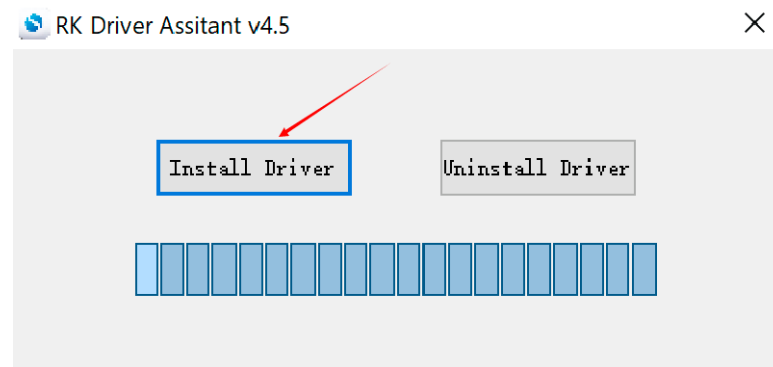
Before updating to the Android 8.1 Oreo, please back up useful files of your DX200. This batch tool will fully format the DX200, therefore, all of your files will be erased.

## 1. Installing The Driver

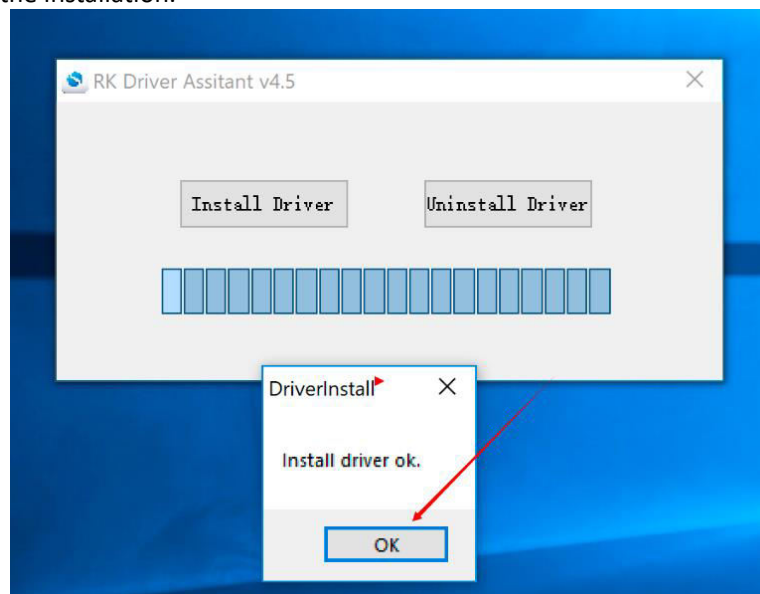
1. Run DriverAssitant\_v4.5/DriverInstall.exe



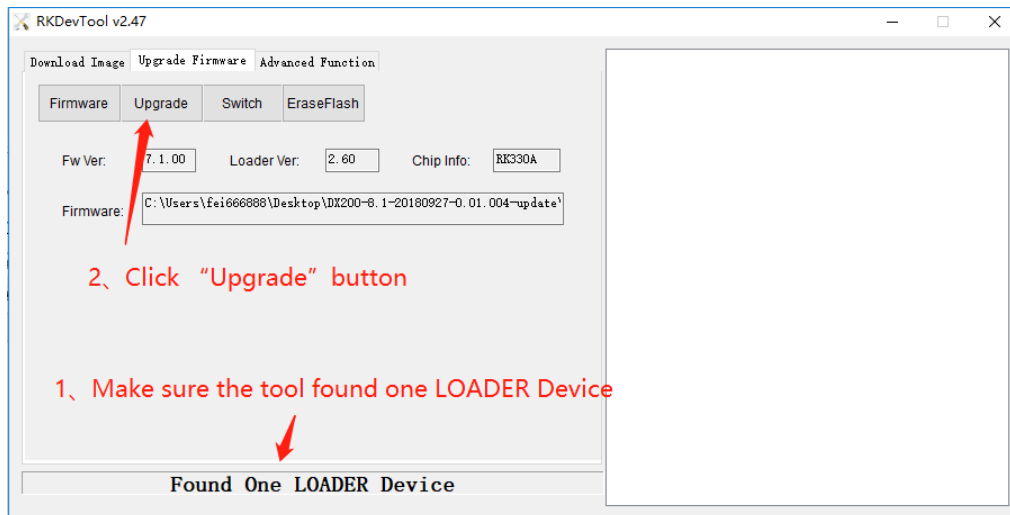
2. Click "Install Driver" button to start the Installation.



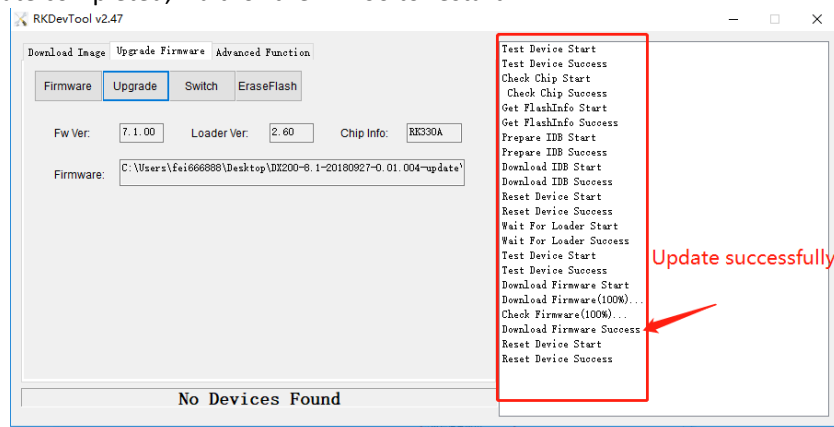
3. When the "Install driver ok." screen pops up. The installation is finished. Click "OK" to complete the installation.



2.4. The DX200 will now be recognized by your computer. On the batch tool, “Found One LOADER Device” will show up. Press “Upgrade” to start the system update.



2.6、 Update completed, wait for the DX200 to restart.

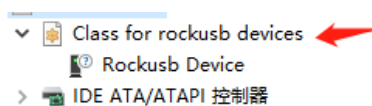


### 3. Troubleshooting

3.1. On step 2.4, if “Found One LOADER Device” does not show up, or the update has failed:

A. Unplug the USB-C cable, press and hold the power on button for 10 seconds to hard reset the DX200. Then repeat the process.

B. Make sure the driver is installed. After the driver is installed, connect the DX200 to your computer with the play button being held down. The below device will be found under Device manager.



C. Make sure the USB-C cable is functioning correctly. Changing to another USB-C cable maybe a solution.

3.2、 Return to Android 6.1

A. Run the Android 6.1 batch tool and load the Android6.1 image file to return the system to Android 6.1.