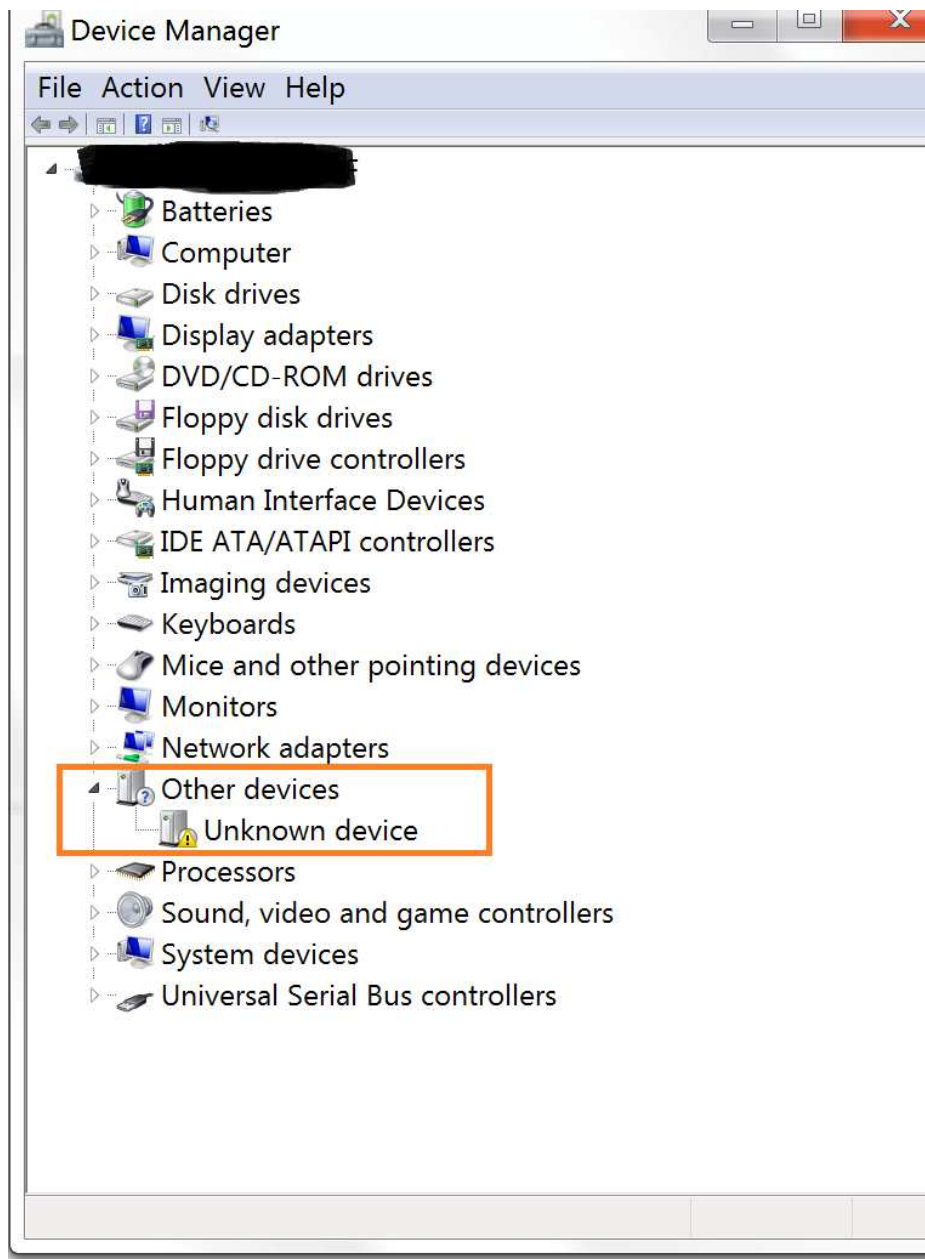
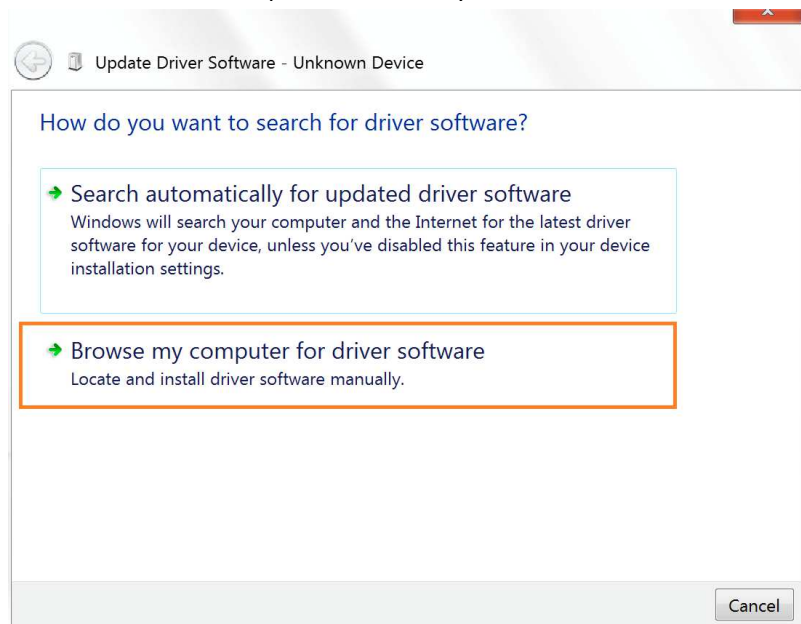


1. Make sure you have the latest firmware ready.
2. Open the device manager on the computer.
3. Power off the DX80.
4. Connect one end of the USB cable to the computer.
5. Press and hold the Volume+ button, then insert the other end of the USB cable (Micro USB plug) to the DX80, release the volume+ button after the DX80 is recognized as an unknown device, as shown on the following picture.

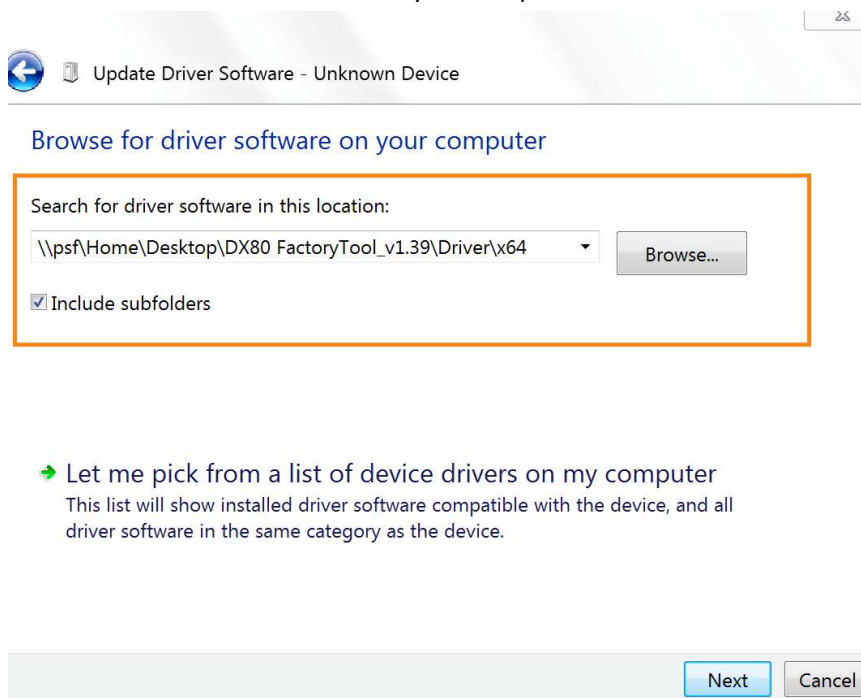


6. Right click the unknown device, and left click the first option to start the driver installation.

7. Press the second option to manually install the driver.

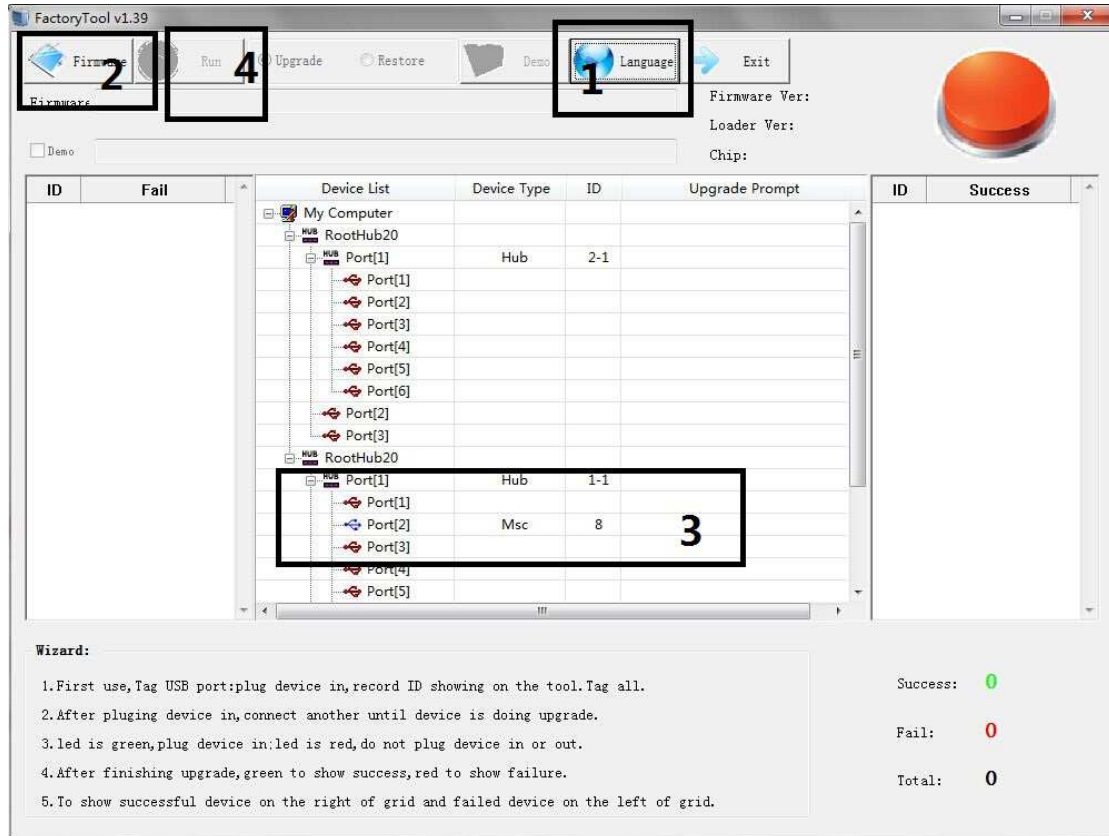


8. Navigate to the driver folder. Select driver from X86 folder if your computer is 32bit OS. Select driver from X64 folder if your computer is 64bit OS.



9. Restart your computer after driver is installed.

10. Launch the batch tool.



11. As shown on the above picture, click button 1 to select language.
12. click button 2 to add the firmware.
13. Press and hold the volume+ button, and connect the DX80 to the computer again. Release the volume+ button after you see the area 3 turns to blue color, and the device type will show "loader".
14. Press button 4 to start the firmware update.